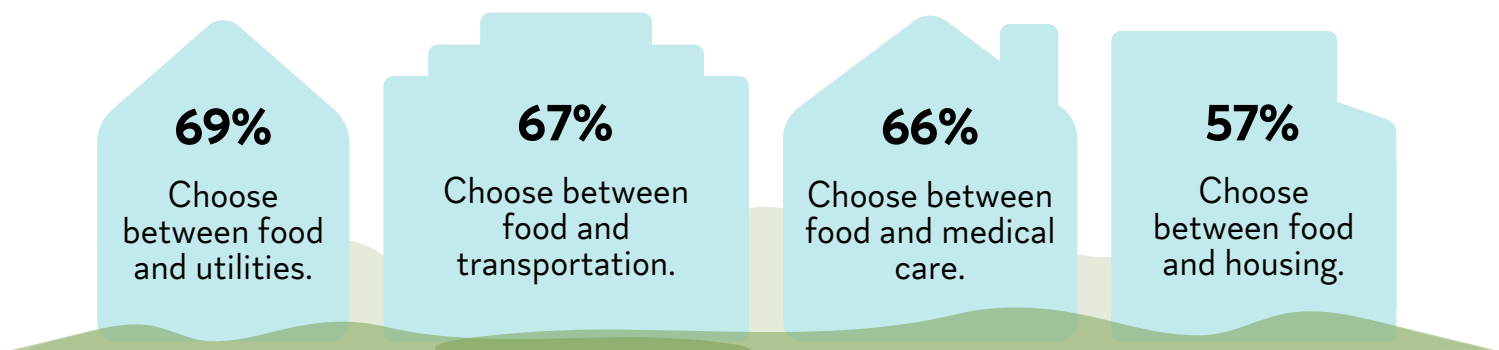


# Rapid Response Community Fund

## Building Community Care During the Food Crisis

Now the longest in history, the 2025 federal shutdown has delayed SNAP payments and reduced food access for over 40 million participants, including over 200,000 in the bistate St. Louis metro area.

This lapse in food subsidies has countless impacts on individuals, families, and communities and further forces households to choose between consistent, healthy meals and other basic needs.



**Grassroots organizations, community groups, churches, and neighbors are filling the gaps, but many are unable to plug into large distribution efforts because of funding limitations, prohibitive eligibility requirements, or staff capacity.**

Since the Rapid Response Community Fund opened on November 4<sup>th</sup>, community has clearly illustrated the severity of this gap. **In just two days**, the fund received countless inquiries, including

- ▶ 55+ applications with \$1 million in requests
- ▶ 30+ groups with needs under \$5,000
- ▶ Over 100,000 individuals in need of additional food resources

Unfortunately, the gap is so great that even large-scale distribution efforts are facing challenges. Our region needs **flexible funds that trusted groups rooted in community can leverage** to meet changing needs.

Dr. Andrea Jackson-Jennings  
Managing Director, Regional Response Team

# THE FOOD SECURITY ECOSYSTEM



**Large-scale nonprofit operations** provide essentials, especially shelf-stable options, to existing network partners.



**Urban farms and farmer's markets** partner to offer fresh produce and meats to partner networks.



**Place-based efforts** like soup kitchens, neighborhood pantries, community gardens, and churches supply food to families by partnering with large nonprofits or through donation drives.



**Schools and child care centers** provide consistent meals for eligible children during the school day.



**Families and neighbors** fill remaining gaps through meal swaps, grocery carpool, backyard gardens, hunting, and fishing, especially in suburban and rural areas.

## Paths to Food Access

## Place-based Investment Strategies

**Program reach is limited by staff capacity and food availability.**

Funds to support organization's ability to plug into community-wide or regional efforts in order to maximize impact.

**Limitations on physical space food production capabilities.**

Funds to extend growing season or plant in empty plots or raised beds.

**People face barriers to central pick-up points including safety, accessibility, and transportation.**

Funds to community centers and pantries that serve seniors, children, disabled individuals, or other marginalized groups.

**Fresh produce, quality meats, and foods for those with special diets are hard to come by, especially in crisis.**

Flexible dollars allow established centers and partnerships to supplement non-perishable donations with perishable necessities.

## Community Impacts Possible with Dedicated Resources

**\$500**

Helps a pantry provide a week of groceries to five families of four.

**\$1,000**

Provides flexible funding so a pantry can supplement non-perishables with fresh foods.

**\$2,500**

Covers staffing costs for deliveries, interpretation, and other accessibility measures.

**\$5,000**

Supports outreach and canvassing to reach food insecure families where they are.

**\$10,000**

Helps a small nonprofit partner with schools to provide daily meals to students for a month.



**Support food security with and for your St. Louis neighbors!**  
Visit [www.regionalresponseteam.org/food-rapid-response](http://www.regionalresponseteam.org/food-rapid-response) to donate.